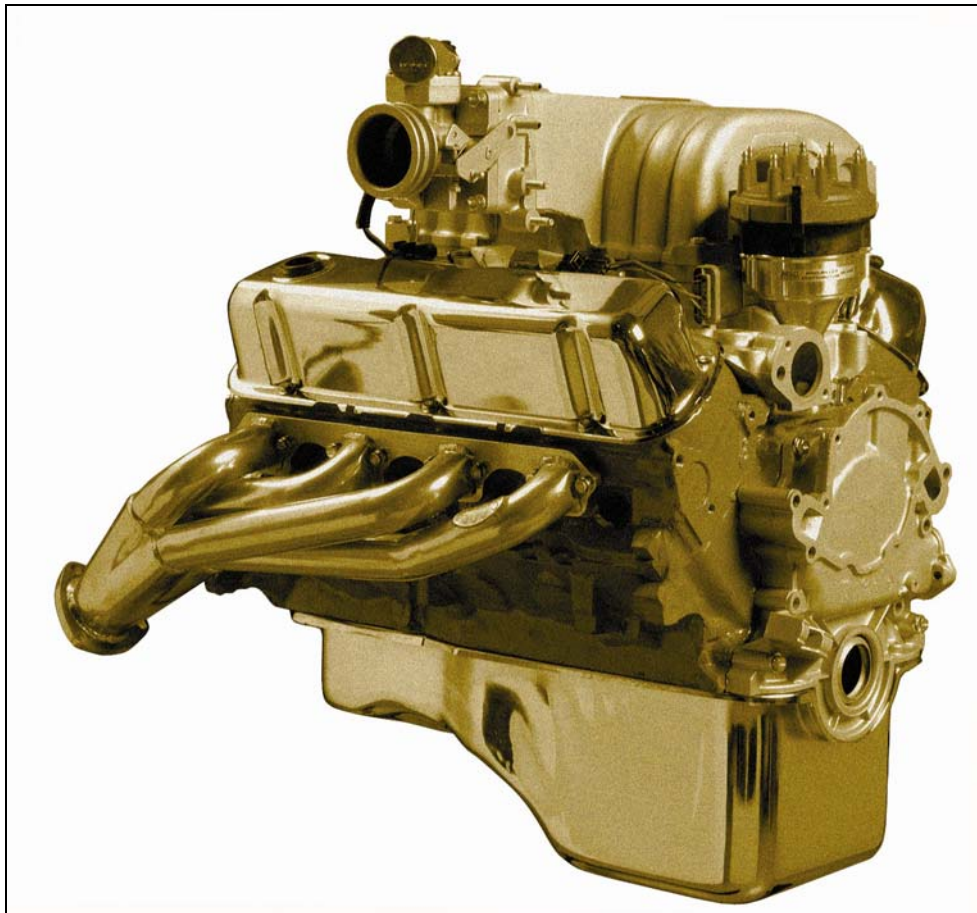




Wire Harness Installation Instructions

Part # 65120 – 1986 – 1993 (5.0L H.O) Ford Engines

Part # 65121 – 1994 & 1995(5.0L H.O) Ford Engines



Manual # 90539

Perfect Performance Products, LLC™
Painless Performance Products Division
2501 Ludelle Street Fort Worth, Texas 76105-1035
(800) 423-9696

**We have provided the most accurate instructions possible and are always concerned about corrections or improvements to be made. If you have found errors or omissions, or if you simply have a suggestion concerning these instructions please write us at the address on the cover and let us know about them. Or, send us a fax to (817) 244-4024.
We appreciate your business.**

For Technical Questions

E-mail: tech@painlessperformance.com

Tech line: (800) 423-9696

Perfect Performance Products, LLC shall in no way event be liable in contract or tort (including negligence) for special, indirect, incidental or consequential damages, such as, but not limited to, loss of property damage, or any other damages, cost or expenses which might be claimed as the result of the use of failure of the goods sold herby, except only the cost of repair or replacement.

**P/N 90539 PERFECT PERFORMANCE MANUAL
April 2008**

Copyright © 2008 by Perfect Performance Products, LLC

TABLE OF CONTENTS

1.0 Introduction.....	4
2.0 About These Instructions.....	4
3.0 Tools Needed.....	4
4.0 Pre-Installation and Harness Routing Guidelines.....	5
5.0 General Installation Instructions.....	6
5.1 Grounding the Vehicle.....	6
5.2 Rough Installation.....	6
5.3 Harness Attachment.....	7
5.4 Terminal Installation Instructions.....	7
6.0 Ford 5.0 Wiring Harness Installation.....	8
6.1 Contents of the Perfect EMS Kit.....	8
6.2 Dash Section Installation.....	8
6.3 Engine Group Installation.....	11
6.4 Tail Section Installation.....	16
7.0 Ford 5.0 HO Throttle Plate and TPS set-up.....	16
8.0 Ford Start Up.....	17
9.0 Trouble-Shooting Instructions.....	17
9.1 The “Check Engine” Light.....	17
9.2 Retrieving Trouble Codes from the Computer.....	18
9.3 When to Call Perfect Performance Products Tech Line.....	19

LIST OF FIGURES

Figure 5.1	PERFECT ECM.....	8
Figure 6.1	Check Engine Light.....	9
Figure 6.2	Throttle Position Sensor (TPS).....	9
Figure 6.3	Idle Air Control Valve (IAC).....	10
Figure 6.4	Thick Film Ignition (TFI).....	10
Figure 6.4	'94-'95 Distributor w/o Thick Film Ignition.....	10
Figure 6.5	Manifold Absolute Pressure Sensor (MAP).....	11
Figure 6.6	Heated Oxygen Sensor (HO2).....	11
Figure 6.7	Intake (with plenum removed).....	14
Figure 6.8	Location of TPS & IAC.....	14
Figure 6.9	Injector (numbered).....	15
Figure 6.10	Location of IAT & ECT.....	15
Figure 6.11	ALDL Plug.....	17

LIST OF TABLES

Table 4.1	Compatible Parts.....	6
Table 6.1	Dash Section.....	8
Table 6.2	Engine Section.....	11
Table 6.3	Tail Section.....	16
Table 9.1	Trouble Code List.....	19

1.0 INTRODUCTION

You have purchased what we at Perfect Performance Products, LLC believe to be the most up-to-date and easiest-to-install automotive fuel injection system on the market. It is designed for easy installation, even with little or no automotive electrical experience.

This is a complete wiring system for the Ford 5.0L H.O. engine, when placed in a transplant environment. All of the circuits needed by the Perfect ECM to efficiently control the fuel injection system are included.

The ECM, Fuse Block, Relays, and MAP Sensor can easily be mounted under the dash. Most of the wiring in the harness has been pre-terminated to the proper connector and has been color-coded or labeled.

The Perfect EMS harness has been divided into three major groups:

ENGINE GROUP	Includes wiring for the fuel injectors, distributor, sensors, constant power, coil ignition power and ground wires.
DASH GROUP	Includes ignition feed wire, ALDL plug connector, check engine light, MAP Sensor, TACH wire, system relays, fuse block, and ECM plugs.
TAIL SECTION	Power wire for the fuel pump.

2.0 ABOUT THESE INSTRUCTIONS

The contents of these instructions are divided into 8 major sections:

- 1.0 Introduction
- 2.0 About These Instructions
- 3.0 Tools Needed
- 4.0 Pre-Installation and Harness Routing Guidelines
- 5.0 General Installation Instructions
- 6.0 65120/65121 Fuel Injection System Kit
- 7.0 Start-Up
- 8.0 Trouble Shooting Instructions and Trouble Codes

Sections are further divided into **Paragraphs** and **Steps**. Throughout, the **Figure** numbers refer to illustrations and the **Table** numbers refer to information in table form. These are located in or near the sections or paragraphs to which they correspond. Always pay careful attention to any **Notes** or any text labeled **CAUTION**.

3.0 TOOLS NEEDED

The following tools are required:

Crimping Tool	<i>Note: Use a quality tool to avoid over-crimping.</i>
Wire Stripper	
Electric Drill	
1 5/8" Hole Saw	(for rubber grommet in firewall)
Feeler Gauge	(for TPS set-up)

4.0 PRE-INSTALLATION AND HARNESS ROUTING GUIDELINES

The installation of your harness consists mainly of two parts:

- The physical routing, positioning, and plugging-in of the sensors, injectors and ignition system.
- The electrical connection of the individual circuits.

These two major tasks are not separate steps, but are integrated together.

How to physically route the harness in your vehicle depends a great deal upon the particular make/model of your vehicle and to what extent you want to secure and conceal the harness. We do offer some general guidelines and routing practices starting in **Paragraph 4.3**, GENERAL installation instructions in **Section 5.0**, and precise instructions concerning the electrical connections you will have to make beginning in **Sections 6.0**. To help you begin thinking through the installation of your wire harness, read the following sections:

You should get to know the particular engine that you are using:

- OEM Ford Fuel Injection Systems use either a Mass Air Flow (MAF) sensor or Manifold Absolute Pressure (MAP) sensor. The Perfect 65120/65121 systems ECM use a Manifold Absolute Pressure (MAP) sensor only.

- 4.1 Painless requires the use of the parts listed in **Table 4.1**. These parts meet all requirements and are compatible with the PERFECT system. The numbers listed are Ford, Motorcraft, AC Delco and GM part numbers.
- 4.2 Familiarize yourself with the harness by locating each of the harness groups and by looking at the connectors on the wire ends.
- 4.3 Decide where the computer and sensors will be mounted in the vehicle. PERFECT wire harness kits are designed to mount either under the dash or in the lower right side kick panel.
- 4.4 A good exercise is to lay out the wire harness on the engine and determine the optimum placement for the firewall grommet on the vehicle. Next familiarize yourself with all of the connectors and harness breakouts. After drilling the hole for the firewall grommet in the firewall, route the harness from the inside of the vehicle into the engine compartment. Use caution not to chafe or cut through the insulation on any of the wires on the harness.
- 4.5 Route the harness away from exhaust manifold or headers and carefully around accessory brackets. Factory harness clips located on the valve covers and intake manifold provide extra protection from hazards and also provide places for tie wraps or other support.
- 4.6 Always route the harness away from sharp edges, exhaust pipes, and hood hinges.
- 4.7 Support the harness approximately every 6 inches to eliminate any unnecessary tension on the harness.
- 4.8 Allow enough slack in the harness at places where movement could possibly occur (body to frame, frame to engine, etc.)
- 4.9 The wires should be bundled into harness groups. Whenever possible use tape, tie wraps or split loom to support the harness on the engine and body.

65120/65121 FUEL INJECTION KIT			
Description	Ford	Motorcraft	AC Delco / GM #
Thick Film Ignition module (TFI).....	E6SZ12A297A.....	DY-504	
1994-5 Pickup Coil (replacement only)....	E9TZ12A112A.....	DU-50	
Throttle Position Sensor (TPS).....	E6AF9B989CA.....	CX-1133	
1994 Throttle Position Sensor (TPS).....	F4SZ-9B989-AA.....	DY-987	
1995 Throttle Position Sensor (TPS).....	F1SZ-9B989-AB.....	DY-987	
Intake Air Temperature Sensor.....			25036979
Engine Coolant Temperature Sensor.....			25036979
Heated Oxygen Sensor.....			AFS - 105
Ignition Control Module			D - 1986 - A
Knock Sensor.....			10456126
Manifold Absolute Pressure.....			16137039
Idle Speed Control Actuator.....	E9AZ9F715BA.....	CX1824	
Ignition Coil.....	F7PZ12029AA.....	DG470	

Table 4.1 Compatible Parts List

5.0 GENERAL INSTALLATION INSTRUCTIONS

CAUTION:

- Do not disconnect the battery or computer connector(s) while the ignition is on.
- Do not short any wire in this harness to ground (with the exception of labeled ground wires) or damage to the computer will result.
- Giving or receiving a jump-start may damage the computer.
- Do not use a test light when testing computer sensors or computer circuits. Damage to the computer will result.
- Each connector in this harness is different and will not fit in the wrong place. NEVER FORCE ANY CONNECTOR.
- When connecting the plugs to the computer USE EXTREME CARE to make sure none of the pins in the computer are or have become bent.
- The fuel pump/regulator MUST maintain 45 P.S.I. (engine running)

5.1 GROUNDING THE VEHICLE

A perfectly wired automobile will not have problems if everything is properly grounded. Do not go to the effort of installing a quality wire harness, only to neglect proper grounding.

- 5.1.1 Connect a ground strap or cable (minimum of a 2-gauge wire) from the negative battery terminal to the automobile chassis (frame).
- 5.1.2 Connect a ground strap from the engine to the chassis (frame). DO NOT RELY UPON THE ENGINE MOUNTS TO MAKE THIS CONNECTION.
- 5.1.3 Connect a ground strap from the engine to the body.

5.2 ROUGH INSTALLATION

CAUTION: Disconnect the power from your vehicle by removing the negative cable from the battery.

Note: Make no wire connections or permanent mounting of any kind at this time.

- 5.2.1** Position the computer, fuse block, relays and sensors in their intended locations.
- 5.2.2** Drill a 1-5/8" hole for the firewall grommet near the computer for the engine group and tail section to pass through.
- 5.2.3** Route the engine group and tail section through the hole. Push the grommet (already installed on the harness) into the hole until it is seated.
- 5.2.4** Route the dash group over to its intended location.

5.3 HARNESS ATTACHMENT

Note: Harness routing and shaping will be a time-consuming task. Taking your time will enhance the beauty of your installation. Please be patient and take your time.

- 5.3.1** Permanently mount computer. You should also mount the parts (sensors, relays, etc.) that will be used for your engine at this time. These parts will vary by application.
- 5.3.2** Mold harness groups to the contour of the dash, engine, frame, etc. Remember to route the harness away from sharp edges, exhaust pipes, hinges, and moving parts.
- 5.3.3** Attach harness groups to your automobile with clips or ties starting at the computer and working your way outward.

Note: Do not tighten tie wraps or mounting devices at this time. Make all harness attachments loosely.

- 5.3.4** When used every 1-1/2" or so on the visible areas of the harness, plastic wire ties make a very attractive assembly. Otherwise, a tie installed in other areas every 6" or so will hold the wires in place securely. REMEMBER TO TAKE YOUR TIME.

5.4 TERMINAL INSTALLATION INSTRUCTIONS

Note: In the following steps you will be making the circuits connections. Before you start, you should carefully read Sections 6.0 through 8.0, as applicable, and continually refer to the wire connections charts, DOUBLE CHECKING your length calculations before cutting any wire or making any connections. These directions are for the wires, which do not have a connector already, installed on them.

- 5.4.1** Have all needed tools and connectors handy.
- 5.4.2** Select the correct terminals for the wire and application.
- 5.4.3** Determine the correct wire length and cut wire. Remember to allow enough slack in the harness and wires at places where movement could possibly occur. DOUBLE CHECK YOUR CALCULATIONS.
- 5.4.4** Strip insulation away from wire. Strip only enough length necessary for the type of terminal you are using.

Note: In the following step, make sure that the terminal is crimped with the proper die in the crimping tool. An improper crimp will not make a good connection. DO NOT OVER CRIMP.



FIGURE 5.1 PERFECT ECM

- 5.4.5** Crimp the terminal onto the wire.
- 5.4.6** Connecting the wires and connectors throughout the harness is a repeating process. Make sure that each wire is first properly routing and then attach. **DO NOT ATTACH THEN ROUTE AFTERWORD.**
- 5.4.7** When all wires are attached, tighten the mounts and ties to secure harness permanently.
- 5.4.8** Attach the connectors to the computer **BEING CAREFUL NOT TO BEND ANY PINS.**
- 5.4.9** **Only after all connections have been made** throughout the harness, connect the battery to the vehicle.

6.0 FORD 5.0 WIRING HARNESS INSTALLATION INSTRUCTIONS

(65120 will control the 1986-1993 engines) (65121 will control the 1994-95 engines)

6.1 CONTENTS OF THE 65120 and 65121 KITS

Take inventory to see that you have everything you are supposed to have in this kit. If anything is missing, go to the dealer where you obtained the kit or contact Painless Performance (800) 423-9696. The kit should contain the following items:



- The main wire harness with the connectors already on the ends of most of the wires.
- Thick Film Ignition Adaptor(65120 only), Distributor Pigtail(65121 only)
- Fuel Injection Installation Instructions P/N 90539 (this booklet)
- ECM, ECM mounting screws and Relays

6.2 DASH SECTION INSTALLATION

The wires in this group consist of the ALDL connector, the check engine light, fuse block, relays, and tach wire, ignition hot wire, MAP sensor, and electric fan relay ground wire.

Note: You will need to connect the check engine light wires to their mates in the wire harness.

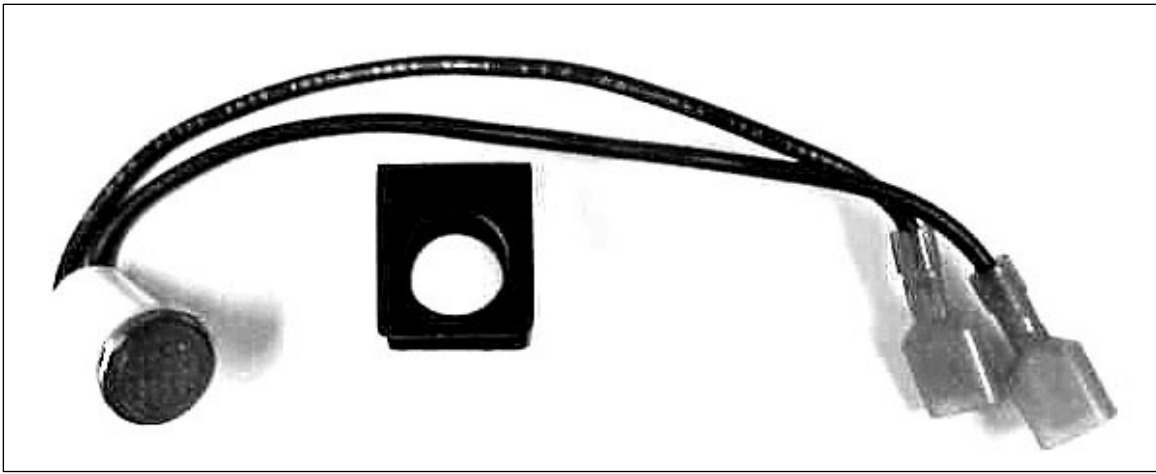


Figure 6.1 Check Engine Light and Bracket



Figure 6.2 (TPS) Throttle Position Sensor (1986-1993)



Figure 6.2 (TPS) Throttle Position Sensor (1994-1995)

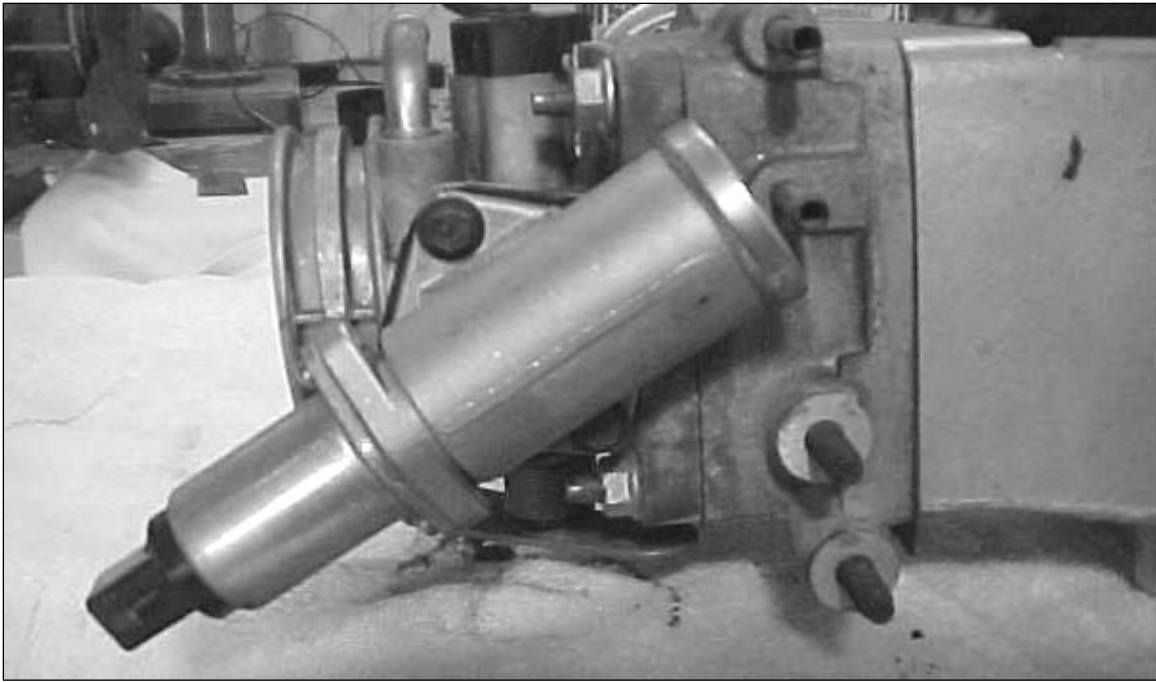


Figure 6.3 (IAC) Idle Air Control Valve

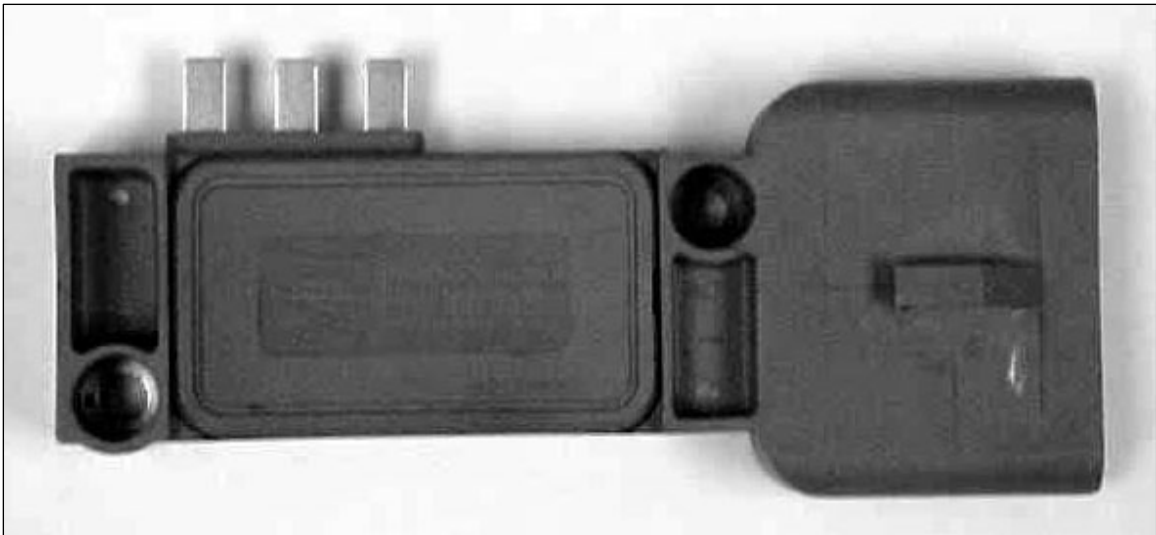


Figure 6.4 (TFI) Thick Film Ignition Modules (1986-1993 only)



Figure 6.4 (Late Distributor connection 1994-1995 only)



Figure 6.5 (MAP) Manifold Absolute Pressure Sensor



Figure 6.6 (HO 2) Heated Oxygen Sensor

Locate the Pink and Pink/Black wires (labeled IGN #1 and IGN #2) and attach them to an ignition hot fused 12V source. **POWER IS REQUIRED WHEN THE KEY IS IN THE RUN AND START POSITION.** IGN #1 (PINK) is the power for the computer and relays. IGN #2 (PINK/BLACK) is the power wire for the Ignition Coil.

6.3 ENGINE GROUP INSTALLATION

The Engine Group is designed to be separated into left side (driver), right side (passenger). Each side is tie-wrapped separately, **but not labeled**.

Note: The plenum **MUST** be removed to install the harness.

Note: If you have not already done so, separate the tail section (fuel pump) from the engine group and place it out of the way.

- A. Locate the BLACK/WHITE wires labeled **GROUND # 1** and **#2** in the harness that end in a ring terminal. Ground this wire to the engine. An intake manifold bolt is the proper place. These wires are for the grounding source for the ignition and ECM. The engine will not correctly if not attached properly.
- B. Starting at the rear of the engine, using **Table 6.2**, and the **Figures** in **Section 6.3**, begin attaching the connectors to their proper places and THEN secure the harness to the engine when ready.
- C. Locate the RED wire labeled **STARTER RELAY** and route it to the starter relay. Attach this wire to the BATTERY post on the relay.

Color	# of Positions in Connector	Labeled	Connect To
WT/BK, GN/WT, GRN. WT/LTBL, BK/WT, GRY BLU, GN/BK, BN/WT PK/BK	32	J1	ECM J1 PLUG
ORG, GRY, BLK., PPL YLW, LT GRN, OR/BK. OR/RD, PK/BK, TAN, BLU WHT	32	J2	ECM J2 PLUG
RED, RD/WT, RD/BK, PK/BK OR/WT, ORN	6	FUSEBLOCK	
GRN, GN/BK, BK/WT	5	A/C SIGNAL RELAY	
PK/BK, PNK, BK/WT, RED	5	IGNITION RELAY	
ORN, GRY, GN/WT, PK/BK, RED	5	FUEL RELAY	
BN/WT, PK/BK, ORN, BK/WT, OR/BK WT/BK	10	DLC	
PNK		IGNITION #1	FUSED IGN. 12V SOURCE
BLK, GRY, LTGN	3	MAP	MAP SENSOR
GRY		TACH.	TACHOMETER
GN/WT		FAN RELAY	ELECTRIC FAN RELAY GROUND

Table 6.1 Dash Section

Colors	# of Positions in Connector	Labeled	Connect to
PK/BK		IGN #2	FUSED IGN 12V SOURCE
BK/WT		GROUND #1	ENGINE GROUND SOURCE
BLUE	1	KNOCK	KNOCK SENSOR
BLK, TAN	2	IAT	INTAKE AIR TEMP. SENSOR
BK/WT		GROUND #2	ENGINE GROUND SOURCE
BK/WT, PK/BK, PUR, BLK	4	OXY	OXYGEN SENSOR
RED		STARTER RELAY	STARTER RELAY BATT. TERMINAL
OR/RD, BLK, PK/BK	6	TFI	THICK FILM IGNITION MODULE
PK/BK, WHT	3	COIL	IGNITION COIL
PK/BK, WHT, BLK, WHT	4	ICM	IGNITION CONTROL MODULE
BLK, BLU, GRY	3	TPS	THROTTLE POSITION SENSOR
PK/BK, WT/LTBL	2	IAC	IDLE AIR CONTROL VALVE
GRN		A/C SIGNAL	A/C COMPRESSOR
BLK, YLW	2	CTS	ENGINE COOLANT TEMP. SENSOR
PK/BK, BLU	2	INJ. #	INJECTORS 1, 4, 6, 7
PK/BK/GRN	2	INJ. #	INJECTORS 2, 3, 5, 8
Notes:			
1. If you have headers you may have to relocate the heated oxygen sensor for proper clearance. Painless also has bungs for you HO2 sensors, Painless part number 60406.			

Table 6.2 Engine Section

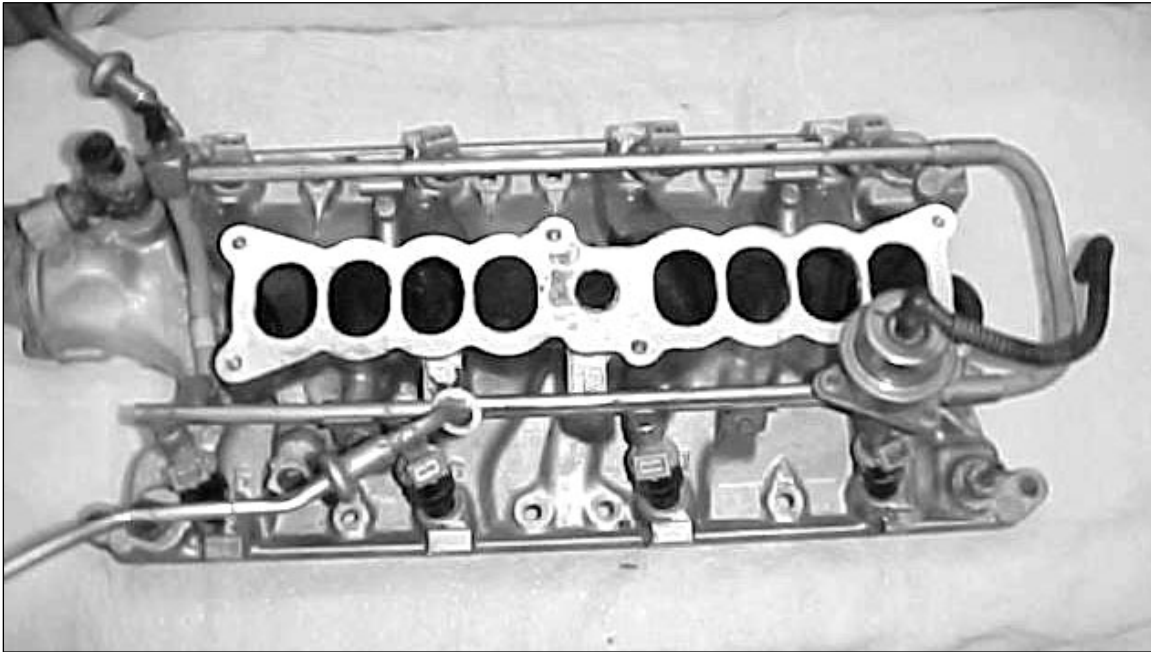


Figure 6.7 Intake (with plenum removed for harness installation)

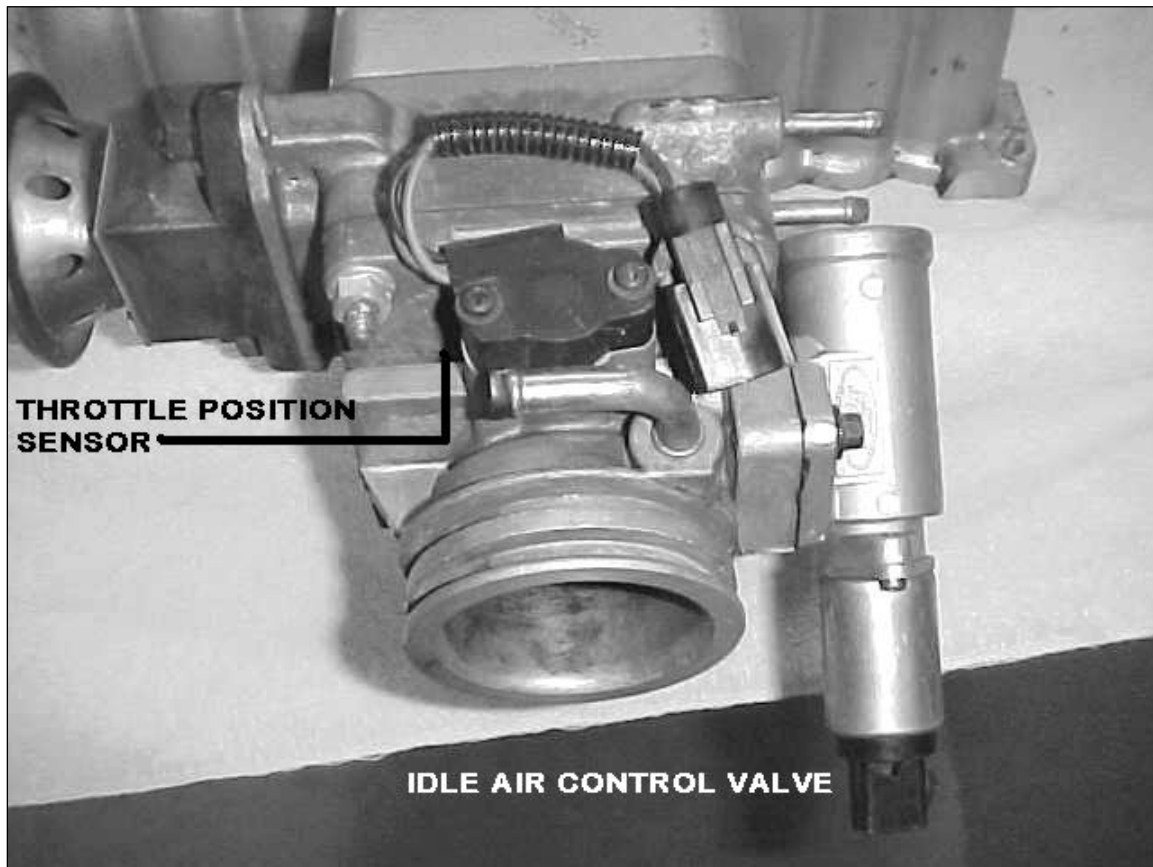


Figure 6.8 Locations of TPS & IAC (1986-1993 only) (1994-5 TPS see Figure 6.2)

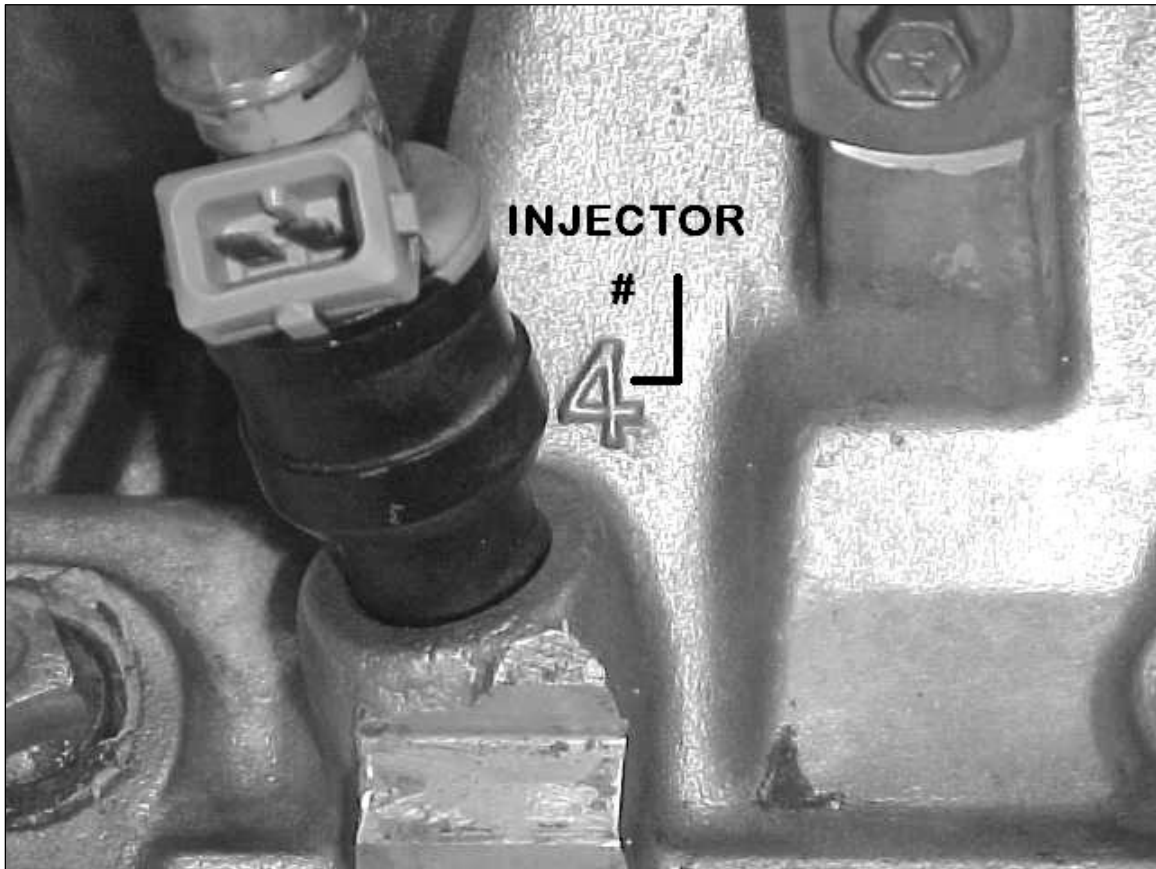


Figure 6.9 Injector # Locations (numbered on stock intake)

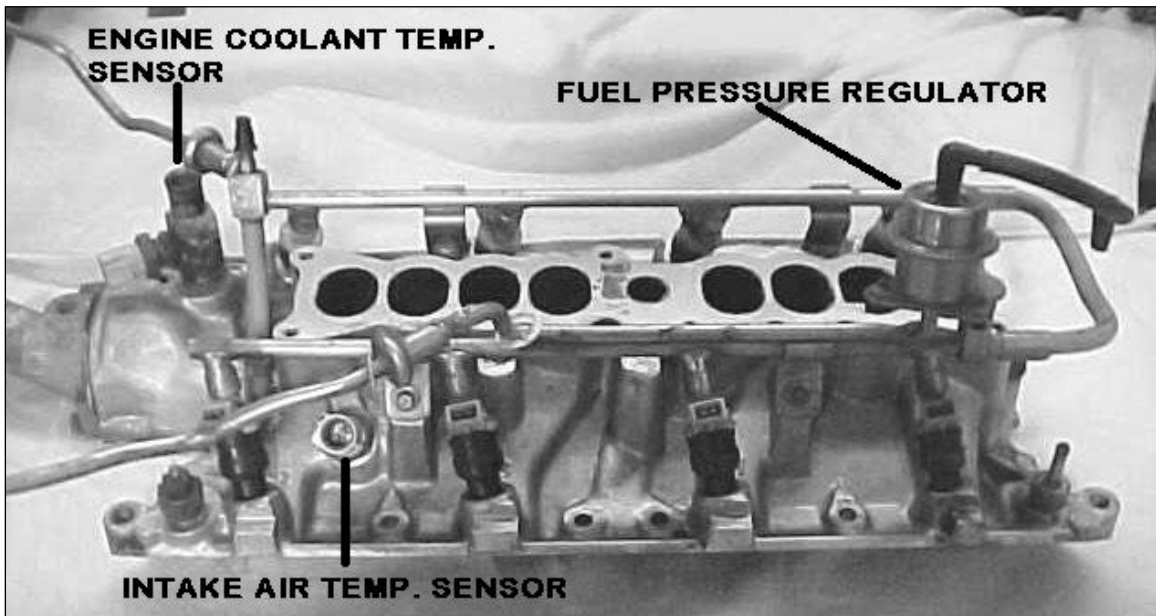


Figure 6.10 Locations of IAT & ECT

6.4 TAIL SECTION INSTALLATION

- A. Locate the tail section that you earlier separated from the engine group. Begin routing it towards the rear of the vehicle. Be sure to avoid all sharp edges, moving or hot parts, or anything else that may damage the harness.
- B. Take the long GRAY wire (labeled FUEL PUMP) and route it to the fuel pump. This is the power wire for the fuel pump.

Wire	# of Positions	Labeled	Connect to
Gray		FUEL PUMP	FUEL PUMP B+

Table 6.3 Tail Section

7.0 FORD 5.0 H.O THROTTLE PLATE AND TPS SET-UP

*** The following procedure is absolutely critical for the engine to idle properly, accelerate well and perform at the levels the Perfect System has been calibrated for.**

- A. Back out the throttle plate stop screw until it clears the throttle arm by 0.020".
See photo below.



- B. Insert a .020" feeler gauge between the throttle stop screw and throttle arm. Turn the screw in until it just contacts the feeler gauge. (It may be necessary to gently hold the throttle plate closed, in order to detect when the contact is made.)
- C. Remove the feeler gauge, and turn the stop screw in an additional 2 ¾ turns.
- D. Using a digital voltmeter, probe the "TPS" ground (black wire) and "Signal return" (blue wire).
- F. Start the engine and adjust the TPS so that the voltmeter reads .98V (engine running, throttle arm in contact with stop screw). In some cases, it may be necessary to elongate the adjustment slots on the TPS, in order to obtain .98V.

8.0 FORD START UP

- 8.1** The fuel system must be pressurized. This is done by turning the key on and off several times.

Note: Inspect your fuel lines for leaks, from the tank to the engine.

- 8.2** Start your engine and listen for noises that would indicate a problem, while inspecting your engine for fluid leaks.

- 8.3** You are now ready to set your initial engine timing.

8.3.1 Using a jumper wire, jump terminals A and B of the ALDL plug together.

8.3.2 Loosen your distributor and set your initial timing to the factory setting of 10° BTDC.

8.3.3 Tighten the distributor back down and check timing.

8.3.4 Shut off engine.

- 8.4** Check your HO2 sensor bungs for leaks while your vehicle is running.

9.0 TROUBLE SHOOTING INSTRUCTIONS

Normally, the “check engine” light should come on when the ignition is initially turned on, and then go out a few moments after the engine starts running. If it reappears, or stays on while the engine is running, the computer has detected a problem and a trouble code has been set.

9.1 THE “CHECK ENGINE” LIGHT

- 9.1.1** The computer identifies particular trouble codes by flashing the “check engine” light in a certain way. The codes are read by counting the flashes:

- A.** The first digit (the “tens” digit) of the code is flashed quickly, followed by a brief pause, and then the second digit (or “ones” digit) is flashed, followed by a longer pause. For example, three (3) quick flashes followed by a brief pause followed by two (2) flashes indicates code 32.
- B.** The code will repeat itself and then the next code, if any, will be displayed in the same manner.



Figure 6.11 ALDL Plug

9.2 RETRIEVING TROUBLE CODES FROM THE COMPUTER

- 9.2.1** In order to retrieve the trouble codes stored in the computer, locate the ALDL plug. Take a jumper wire and jump terminals A and B together. Turn the ignition switch to the “ON” position, but leave engine “OFF.”
- 9.2.2** After you have read all codes, write them down for reference. Turn the key “OFF.” Remove the jumper wire from the ALDL. This procedure will take a few minutes. **Do not rush.**
- 9.2.3** Take the codes one at a time and match them to the codes in **TABLE 9.1**. This will tell you in which circuit the computer has detected a problem with.

Note: A code indicates a problem in a specific circuit, **NOT THAT A PARTICULAR PART IS BAD.**

- 9.2.4** Before taking more extensive corrective actions for any trouble codes, make sure that all connections on the indicated circuit, **INCLUDING THE COMPUTER**, are clean and tight. Inspect the wiring in the circuit for any broken, shorted, or exposed wires. Finally, insure all ground wires are clean and secure.
- 9.2.5** Your ECM may have codes 51 & 81 stored in it. These codes automatically are put in at the time of the ECM programming from PERFECT.
- 9.2.6** If you are getting a code from your computer and need to clear the code, other than code 12, after you have replaced a part, readjusted a part, etc. You can do this by making the following steps:
 - A: Install a jumper wire from terminals A to terminal B of the ALDL.
 - B: Ignition “ON” engine “OFF”
 - C: Move throttle from 0% (idle) to 100% (WOT) and back to 0%.
 - D: Remove the jumper wire.
 - E: Turn ignition “OFF” for at least 20 seconds.
 - F: Ignition “ON” but engine “OFF.”
 - G: Recheck for codes.

9.3 WHEN TO CALL PERFECT PERFORMANCE TECH LINE

- 9.3.1** These harness kits have been built with the highest regard to strict quality control and tested before shipment. Before calling us please double-check all connections and perform basic trouble shooting (fuel pressure, timing, ignition system, etc.)
- 9.3.2** If you have any questions concerning the installation of this harness or are having trouble in general; feel free to call Painless Performance tech line at (800) 423-9696. Calls are answered from 8 AM to 5 PM CST, Monday-Friday, except holidays. Please leave a message if you are unable to reach us and we will return your call as soon as possible.

Code #	Circuit Affected
12	All circuit read (This is a normal code for the ECM)
13	Oxygen Sensor Inactive
14	Coolant Sensor High Voltage (COLD)
15	Coolant Sensor Low Voltage (HOT)
21	Throttle Position Sensor (high voltage)
22	Throttle Position Sensor (low voltage)
23	Manifold Air Temp. (low temp. indicated)
25	Manifold Air Temp. (high temp. indicated)
33	MAP Sensor Circuit (high voltage)
34	MAP Sensor Circuit (low voltage)
41	Ignition Control (IC) (open circuit)
42	Ignition Control (IC) (grounded circuit)
44	Knock Sensor Inactive
51	Calibration Checksum
54	Oxygen Sensor Low V. (lean reading indicated)
55	Oxygen Sensor High V. (rich reading indicated)

Table 9.1 Trouble Code List

Painless Performance Limited Warranty and Return Policy

Chassis, fuel injection harnesses, and Striker ColdShot units are covered under a lifetime warranty.

All other products manufactured and/or sold by Painless Performance are warranted to the original purchaser to be free from defects in material and workmanship under normal use. Painless Performance will repair or replace defective products without charge during the first 12 months from the purchase date. No products will be considered for warranty without a copy of the purchase receipt showing the sellers name, address, and date of purchase. You must return the product to the dealer you purchased it from to initiate warranty procedures.

PERFECT

ENGINE MANAGEMENT SYSTEM[®]

PERFECTION CalTool

P/N: 65245

Manual #90549



Perfect Performance Products, LLC

Painless Performance Products Division

2501 Ludelle Street

Fort Worth, TX 76105-1036

800-423-9696 phone – 817-244-4024 fax

Web Site: www.painlessperformance.com

E-Mail: painless@painlessperformance.com

If you have any questions concerning use of this software or having trouble in general, please feel free to call Painless Performance Products' tech line at 1-800-423-9696. Calls are answered from 8am to 5pm central time, Monday thru Friday, except holidays.

We have provided as accurate instructions as possible, and are always concerned about improvements to be made. Any comments or suggestions concerning these instructions please send a fax to (817)244-4024 or e-mail is always welcome at painless@painlessperformance.com. We appreciate your business.

Perfect Performance Products, LLC shall in no event be liable in contract or tort (including negligence) for special, indirect, incidental, or consequential damages, such as but not limited to, loss of property damage, or any other damages, costs or expenses which might be claimed as the result of the use or failure of the goods sold hereby, except only the cost of repair or replacement.

P/N 90549

December 06, 2007
Revision #3 07/10

Copyright © 2007 by Perfect Performance Products, LLC

Congratulations, on the purchase of the **Perfect Engine Management** fully tunable fuel-injection system. This booklet is designed as a guide through the tuning process. Tuning an injection system can be tricky and at times very complex, but with patience and some general guidelines, a superb running engine can be accomplished.

This kit contains the following parts:



- Instruction Manual #90549
- USB Key
- Software CD w/Case
- Gray communication cable
- NGK Wide Band Interface Cable

NOTICE: This kit is ONLY compatible with Windows XP. It will not work with Windows Vista or Windows 7.

This kit does not include a USB to Serial adaptor. Keyspan® company (www.keyspan.com) makes a very easy to use unit P/N USA-19HS. This is the ONLY adaptor which is compatible with this kit. This adaptor must be purchased for this kit and is available from most electronics suppliers.

Installing the Software

1. Start by placing the Software CD into the CD/DVD drive on the desired computer and close the drive door. The software will automatically start an installation wizard and walk you through the installation process.
2. Follow each step in the wizard and finish the software installation process. At the end when it asks if you would like to start the software, remove the check from the box and close the window.
3. Now that the software has been installed onto your computer; there is an icon on your computer titled, "InGenius Perfect v2.2."
4. **Now insert your purple USB key into a port on your computer.**
5. Double click on the InGenius Perfect v2.2 icon on the desktop or go to START>All Programs>Painless Performance>Ingenius Perfect v2.2>Ingenius Perfect v2.2.
6. Now you can navigate through the software as explained in these instructions. Please read about each section and what changes it allows.
7. If you are ready to connect to your car with the Perfect System installed (it won't work sitting on a workbench disconnected from your engine), place the CD that was included with your new KeySpan USB to Serial adaptor (P/N USA-19HS) and install the software as per the KeySpan software wizard.
8. Now connect the USB to Serial adaptor to the computer, connect the gray communication cable to the USB to Serial adaptor and then, with the ignition **OFF** plug the communication cable into the PERFECT engine harness.
9. After the software opens, turn the ignition to the **ON** position and watch for the red icon on the lower right hand corner of the screen to turn yellow and then green.

**If the icon did not change colors, the ECM and laptop are not communicating. Click the Run button on the top of the screen one time, wait three seconds and then click it again. If the icon on the bottom of the screen still does not change, go to OPTIONS>Settings>Communication>and pick a different COM port. If it was set to COM 1 then try COM 3. Try each different Com Port until the icon on the bottom of the screen turns green. Each time a different Com Port is tried, the RUN button on the top of the screen will need to be toggled on and then off.*
10. **IMPORTANT/IMPORTANT/IMPORTANT: ALWAYS CLICK RECEIVE FOR THE FIRST TIME WHEN THE SOFTWARE CONNECTS TO THE ECM. If you send a blank calibration to the ECM it will erase the ECM and it will be necessary to send it back to Painless to be recalibrated. THIS IS A VERY IMPORTANT DETAIL TO NOT MISS.**

11. On part numbers 65140, 65141, 65252, and 65253 it is necessary to save the calibration onto your computer once you have received it. These calibrations are not in the software package where they can be retrieved once they are modified.
12. In order to load a calibration into the ECM, go to Calibration>Open>Calibrations>
And then pick the appropriate calibration for your PERFECT SYSTEM. For example, A GM Tuned-Port Engine uses the L98 calibration.
13. Click on the desired calibration, open it and now click<SEND>. Do not turn off the ignition or try to start the vehicle until it's completed downloading the cal to the ECM.
14. Now cycle the ignition off, wait seven seconds and then turn it to the On position.
15. **Providing the engine, fuel system, and wiring installation is complete, turning the key to the start position should fire up the engine. Be sure to check the fuel pressure is at the specific pressures for your engine.**

Section 1: General Tuning Guidelines

The adjustments available in this software have the potential to seriously damage the engine, if not done in the proper way. If a leaner than required mixture or too much spark timing is programmed into the engine ECM, detonation leading to a damaged engine will most likely occur. The calibrations provided for each engine are a good base to start programming from. Most of the time the spark tables for each engine combo will not need to be changed from the ones provided. When larger than stock camshafts are installed into an engine the idle and just off idle spark timing may need to be slightly advanced. The fuel tables and idle setup are most often in need of tuning. However, if the fuel/air mixture is too lean engine damage is imminent under sustained heavy loads. A rich condition will usually just produce clouds of black smoke from the exhaust pipe or even foul spark plugs.

Section 2: Dashboard

This screen serves as a "Scan Tool" for the PERFECT systems. The Dashboard shows live sensor data, (RPM, TPS, MAP, O2, and ECT), etc, when the engine is running or the key is in the ON position. This sensor data is used to analyze engine performance, sensor functionality and monitor critical sequences of events. For example, with the key on engine off, if the accelerator is not being pressed at all, the TPS gauge should read "0%". Then with the accelerator pressed to the floor, the TPS gauge should read "99.6%". The throttle adjustment is explained in more detail in Section 3: Idle.

The Dashboard can be customized by adding different gauges with each displaying different parameters and controlling how each parameter is displayed. Simply right click the mouse, choose "Design mode", then right click the mouse again and select "New Gauge". A window displaying all of the available features for each gauge will popup. Simply click on each tab and make decisions based on the appearance and function of the gauge desired. Many of the most important gauges come preset in this software package and can be modified at anytime. Once any design changes have been made, simply go to File-Save Workspace and save any changes that have been made.

Section 3: Fuel

These screens contain the main Base Fuel Table with the fuel injector pulse width values. The values are in milliseconds of injector firing time or in other words, "How long the injector is open and allowing fuel to be sprayed into the engine". Other adjustments in this section are simply a multiplier being applied to the values in the Base Fuel Table to increase or decrease the amount of fuel under specific conditions. It is critical the base fuel table values are as accurate as possible.

See below for a description of how each adjustment is made in the Fuel screen:

1. Main – Base Fuel Table

- RPM (Revolution per Minute) vs. MAP (Manifold Absolute Pressure) Sensor values in KPA (Kilopascals) These are the “X” and “Y” coordinates of the table.
- How much fuel will the engine efficiently burn at a specific RPM? If the engine was held at a constant RPM and MAP(Load) listed on the Base Fuel Table, then the amount of fuel the injector will deliver is directly proportional to how many milliseconds the injector is command to be open.
- It is crucial, when making adjustments to these values; the Coolant and Intake Air Temperature Compensation multipliers are set to 1.00 and the Transient Fuel multipliers must be set to 0. Only then will the engine be running solely on off the Base Fuel Table numbers. The O2 sensor selection in the **Setup menu** must be set to either “No Fuel Trim” or when present “Wideband Monitor”. This is to prevent any Closed Loop O2 fuel trim. This fuel injection system is **only** compatible with the NGK AFX wideband system. Call your local Painless Performance dealer for more details.
- Painless has provided base calibrations for each engine supported, so be sure and start with the correct engine base calibration.

2. Compensation – Coolant Temperature and Intake Air Temperature

- Coolant Temperature – These values are multiplied to the Base Fuel Table values to richen the mixture when the engine coolant, hence the engine, is cold. Or another way of looking at it is, it leans out the mixture as the engine warms up. Generally speaking, the values warmer than 176deg F should be 1.00. This would mean there is no enrichment due to the engine not being at running temperature.
- Intake Air Temperature – These values are multiplied to the Base Fuel Table values to richen the mixture when the intake air is cool and to lean out the mixture when the intake air is hot. It’s best to use the Coolant Temperature to do most of the cold enrichment when the engine is cold and the Intake Air enrichment to fine tune fueling via air temperature.

3. Crank Fuel

- Crank Fuel Prime – This is the initial shot of fuel from the injectors, comparable to throttling a cold carbureted engine before startup. The amount of fuel needed will vary with each different engine combination. Generally, more fuel is needed for quicker starts on engines with larger lift and duration camshafts. Watch for an overly large puff of black smoke out of the tailpipe during startup for an indication if the values in these fields are too large.
- Crank Fuel – This is the amount of fuel sprayed into the engine from 0 rpm to 300 rpm. Colder temperatures require more fuel. Watch for an overly large puff of black smoke from the tailpipe for an indication of too much fuel during startup.
- Crank to Base Fuel Compensation – These values are multiplied to the Base Fuel Table values and are used to gradually pull out the overly rich mixture during cranking. Once the engine speed is greater than 300 rpm, these values will start tapering off the amount of fuel being injected into the engine. Think of this as the transition to the Base Fuel Table while the engine is firing up. It’s equivalent to the choke pull-off on a carburetor.

- Blend Time – This is the time it takes to transition from Crank Fuel to the Base Fuel Tables. Larger times here will slow down the transition and keep the fuel mixture rich longer. Smaller times here will speed up the transition and shorten the amount of time the mixture is richer. If the engine acts like it's about to die after it first fires up, this value may need to be increased dependent upon if the Air/Fuel ratio measured in the exhaust goes lean and the engine stumbles.

4. Transient Fuel

- MAP Acceleration Enrichment - These values are multiplied to the Base Fuel Table values to richen the mixture when there's a change in the amount of engine vacuum. Engine vacuum can be directly translated into the amount of load being applied to an engine. With increased load, the engine will need more fuel to continue to do the same amount of work. Only with a change in the engine vacuum (load) will these fuel multipliers be applied to the mixture.

Fuel Multiplier based on Delta Manifold Pressure (0 to 31.13 msec)

- "**Delta**" – means "**change in**"

- TPS Acceleration Enrichment – These values are multiplied to the Base Fuel Table values to richen the mixture when there's an increase in the amount of throttle being applied to the engine. Only on an increase in throttle will this adjustment be used by the ECM to richen the mixture. In carburetor terms, this adjustment would be the "accelerator pump". If under a hard stomp of the throttle the engine stumbles, slightly increasing these values may help to fix the problem. Watching the Air/Fuel ratio in the exhaust with a wide band O2 sensor, see if the mixture goes too lean. Under a hard acceleration, it would be normal to possibly see the AFR goes as far rich as 10 to 1.

Fuel Multiplier based on Delta Throttle Position (0 to 31.13 msec)

- "**Delta**" – means "**change in**"

5. Decel Fuel Cut-off

- This enables or disables the fuel to be cut-off during a deceleration. It helps prevent and control back-firing when decelerating. It also prevents the engine from loading up with fuel during a high rpm throttle release. In most street applications, it is recommended to enable this feature for best drivability.

6. Oxygen Sensor

- Idle Target A/F Ratio – This is the Air/Fuel Ratio the ECM will trim or add fuel to when in closed loop and the engine is idling. The ECM only has the authority for 20% more or less fuel. Before any closed loop fuel trim is used the Base Fuel table must be as accurate as possible.
- Target A/F Ratio – This is the Air/Fuel Ratio the ECM will learn to for each engine load (MAP) and engine rpm. The desired Air/Fuel Ratio entered in each box is where the fuel trim adjustment in the software will adjust the Air/Fuel Ratio to be. Weather conditions and Barometric pressure have an effect on how much fuel will need to be added or subtracted from the base fuel table. Understand these values are a "Target" for the ECM to reach with Fuel Correction. This is displayed on the Main

Dashboard under the O2 Sensor gauges. Fuel Correction is the percentage of fuel being added or subtracted by the ECM from the Base Fuel Table. The less fuel being added or subtracted from the Base Fuel Table the closer the values are to being correct for a given calibration.

- Enable RPM – This is the engine speed in which Closed Loop O2 Fuel control becomes active. Most stock, smooth idle engine combinations will want to enable the Closed Loop O2 control at around 600 rpm. Larger profile camshafts may require the enable rpm to be around 1500-2000 rpm.
- Disable RPM – This is the engine speed in which the Closed Loop O2 Fuel control becomes inactive.
- Coolant Temp Enable – This is the coolant temperature the engine must be up to in order to enter Closed Loop O2 control. It's best to enter Closed Loop O2 control after the engine is at operating temperature. Generally about 10-15 degrees before the thermostat opening temperature will cover most engine combos.
- Minimum Run Time – This is the minimum time the engine must be running before entering Closed Loop O2 control. The main purpose of this is for hot starts were the engine is still warmed up, but the O2 Sensor is not. If the O2 sensor is not warmed up it will not function properly and will most likely send the incorrect signal to the ECM.

Section 4: Spark

The Base Spark Tables are developed in these screens. The sky's the limit when configuring a spark table for ignition timing, so great care must be taken when modifying these tables. If too much spark advance is calibrated into the system, severe detonation will occur. Detonation will not only hinder engine performance, but can also severely damage the engine. Engine damage will result from too much spark advance and continual detonation.

The values in these tables are in degrees of spark advance before top dead center. In other words, "The number of degrees of crankshaft rotation the spark plug fires before each piston reaches Top Dead Center." It is critical the Base Spark Table values are as accurate as possible. If the engine has detonation under a load or hard acceleration, be sure to retard the spark appropriately. Knock detection can be enabled or disabled in this section. Knock detection is useful in determining if the Base Spark Table has too much advance calibrated in it. Spark compensation based on coolant temperature and engine load can be adjusted here as well.

1. Main – Base Spark Table

- RPM (Revolution per Minute) vs. MAP (Manifold Absolute Pressure) Sensor values in KPA (Kilopascals) These are the "X" and "Y" coordinates of the table.
- The MAP values are a direct translation to the amount of engine load. The higher the MAP value reading indicates a larger engine load.
- Base Spark Table values should only be calibrated when the engine is fully warmed up.
- Painless has provided base calibrations for each engine platform supported, so be sure and start with the correct engine base calibration.

- When the Knock System is enabled, a gauge showing the amount of Knock Retard on the Mini Dashboard can be used to determine if the Base Spark Table needs to be calibrated.
- Generally speaking, the specific spark table provided for each engine platform supported will not need to be adjusted. Some examples of when the timing will need to be advanced more would be when a very large duration/lobe separation camshaft has been installed. The advance from idle and up to about 1500rpm would be the area to slightly increase, so a more stable idle speed can be achieved.

2. Compensation – Altitude and Coolant Temp and MAP

- Altitude - This is used to add or subtract spark advance based on atmospheric pressure. The amount of atmospheric pressure is a measurement taken by the ECM every time the ignition is turned on. This directly relates to the amount of oxygen available to the engine to support combustion. Higher elevations have less atmospheric pressure; hence less air will be pushed into the engine with each piston stroke. SO, to maintain close to the same performance as in lower altitudes; advancing the timing slightly is one option.
- It is always a good idea to monitor the knock system while tuning the spark tables. If the engine is knocking/has detonation/pinging and more spark timing is added, severe engine damage will eventually occur.
- Coolant Temp and MAP – This table is designed to remove spark when both engine load and temperature are both at higher levels. As the engine is loaded and the engine speed decreases knock may occur. This is because the fuel sprayed into the cylinders is given a longer time to heat up before combustion. The amount of spark to be removed will depend on the engine combination, efficiency of the cooling system, and size/weight/gearing of the vehicle it is in. The base calibrations provided in this software package do not have values in this table.
- Knock – All systems supported with this software from Painless Performance use the knock system. It is highly recommended to leave the knock system enabled to prevent severe engine damage. The maximum amount of spark retard the knock system is allowed to enable is 10 degrees.

Section 5: Idle

1. Idle Speed – Desired Idle Speed and Vehicle Speed Enable

- Desired Idle Speed – This is where the idle speed of the engine is set based on coolant temperature. Higher idle speeds are recommended when the engine is cold to quicken the amount of time a cold engine takes to reach operating temperature. On the Dashboard there is an indicator called “Idle in Control of RPM” which tells if the ECM is in control of the idle speed. The throttle must be fully closed for this to occur.
- Vehicle Speed Enable – Where applicable, this tells the ECM when to go into loop idle control in relation to MPH. A good place to start is 25mph.

2. Throttle Setup – Throttle Zero and Throttle Scaler

- Throttle Zero – This is used to synchronize the throttle position sensor signal and what the ECM considers closed throttle. The calibration procedure for this is outlined on this screen. If this number is incorrect, Closed Loop Idle Air Control, Idle Spark Stabilizer and Stall Saver will not work properly.
- Throttle Scaler – This multiplier is used to scale up or down the TPS reading to achieve the correct throttle position percentage at WOT(wide open throttle). With the throttle fully depressed, adjust this value until the percentage at WOT is 99.6%. On this system 99.6% is wide open throttle. Always be sure to check the Throttle Zero value by using the procedure in the software after adjusting the Throttle Scaler.

3. Advanced Idle Calibrations

- Throttle Follower Intro – This value represents the number of steps per percentage of throttle opening the IAC (Idle Air Control) valve will open as the throttle is opened. This acts as a buffer when under a quick deceleration to help the transition from open throttle to closed throttle. Some carbureted applications had a dashpot to dampen a quick snap of the throttle. This adjustment does the same thing, only with the IAC. A value of 1 will cause the ECM to open the IAC one count per 1% of throttle position.
- Vehicle Speed Follower Intro – This value represents the number of steps per vehicle speed (MPH) the IAC valve will open. This is especially useful on a long deceleration down a hill where the throttle is closed and the engine is still above the Desired Idle Speed. Without the Vehicle Speed Follower, the ECM will try to bring the idle down to the set Desired Idle Speed and fully close the IAC. Once the vehicle came to a stop, the engine speed would droop below the Desired Idle Speed and almost die because of the time it takes to open the IAC from its fully closed position.
- Follower Decay – This is the rate in which the Throttle Follower is decayed out. How many seconds it takes to bring the IAC back to its Idle Speed Position. If the engines idle hangs or stays higher than normal, increase this value. If the engine idle droops and almost dies, decrease this value.
- Stall Saver – This is a multiplier used to set a RPM below the Desire Idle Speed in which the Stall Saver goes into effect. So if the idle speed is 750 rpm and the value in this field is set at 0.7500, then the Stall Saver will enable at 562 rpm. Stall Saver adds IAC counts (opens) and advances the ignition timing to keep the engine from stalling.
- Stall Steps – This is the number of IAC steps added by the ECM when in Stall Saver mode. This number will be added every .125 seconds or 8 times per second. The more steps added, the more aggressive the ECM will try to recover the engine from stalling.
- Crank IAC Position – This is the IAC cranking position based on coolant temperature. When the ignition is turned to the on position the ECM will move the IAC to this position to give the engine the correct amount of air to start. The larger the number the higher the engine speed will flare when it first fires up. This is why it is not necessary to hold the throttle open while cranking a fuel injected engine, as it most likely would be on a carbureted engine.
- IAC Max Position – This value is the upper limit for how many counts the IAC can open to. These values are setup at the factory and the Perfect System Calibrations

already have them. Under normal circumstances this value will not need to be changed.

- IAC Max Base Position – This is the maximum IAC position without throttle follower, stall saver or load anticipation added. These values are setup at the factory and the Perfect System Calibrations already have them. Under normal circumstances this value will not need to be changed.

Section 6: Setup

1. Sensors – IAT Sensor

- IAT Sensor – This is where the Intake Air Temperature Sensor input to the computer is enabled or disabled. If an IAT Sensor is present, enable this input. Calibration of the fuel via air temperature must be entered under the Fuel Screen. The IAT sensor calibration is useful to remove a slight amount of fuel as the air temperature increases or to add a slight amount of fuel as the air temperature decreases. On a really cold day, 32deg F and below, this adjustment can be used to enrich the fuel slightly.

2. Oxygen Sensor – Enable/Disable

- No Fuel Trim - This is exactly what it says, "No Fuel Trim" meaning the engine will run directly off of the Base Fuel Table values only. This means the O2 system has been completely disabled. When using an external wide band O2 sensor to monitor the exhaust air/fuel ratio, this will need to be selected.
- Stock Closed Loop – This is only used with a stock narrow band O2 sensor. All PERFECT systems use this type of sensor when no wide band O2 sensor is present.
- **These next two choices REQUIRE the use of a NGK AFX wide band Oxygen Sensor Kit P/N 91101.**

NOTE: Included in this kit is a wideband interface harness with the purpose of connecting a NGK Wideband Sensor P/N 91101 into the main engine harness. Simply match and connect the wires based on their colors and plug into the O2 connector on the engine harness. Be sure and follow the instructions on the Wideband display module to do a free-air calibration before inserting the NGK O2 Sensor into the exhaust pipe.

- Wideband Monitor – This is only used with the NGK AFX wide band kit. Its purpose is to accurately measure the oxygen content in the exhaust to indicate if the engine is receiving too much fuel or not enough fuel. More oxygen is lean and less oxygen is rich. The gauge on the Dashboard of the software that displays, "O2 Sensor" will indicate what the air/fuel ratio is in the exhaust. This gauge will not give an accurate measurement when a narrow band O2 sensor is being used.
- Wideband Closed Loop – This is to enable closed loop O2 fuel trim after the base fuel table has been thoroughly calibrated. The ECM will compare the Air/Fuel ratio value in the Target Air/Fuel ratio table to the actual value read in the exhaust. The ECM has the authority to change the amount of fuel plus or minus 20% of the

values in the Base Fuel table. This is why it is best to have the Base Fuel Table's values within at least 20% of the desired Air/Fuel ratio.

3. Fuel Pump – Prime Time at Keyup

- Prime Time at Keyup – This is the amount of time the fuel pump will run when the ignition switch is initially turned to the on position. Its how the computer primes the fuel rail with pressurized fuel before the engine is being cranked to lessen the amount of time for fuel to be delivered and the engine to start. Three seconds is usually more than enough time to prime the system.

3. Rev Limit

- Engine Speed Limit based on Coolant Temperature – This is the Rev Limiter on the Perfect System. Cold engines and overheating engines need to have a lower rev limit, than engines at normal operating temperature.

4. Aux Output – NOT SUPPORTED IN PERFECT APPLICATIONS

5. Fan 1 – On Temperature/Off Temperature

- On Temperature – On all PERFECT systems this is the temperature in which the ECM will provide a ground signal to an electric cooling fan relay. Set this temperature at approximately 20 degrees Fahrenheit lower than the normal engine operating temperature.
- Off Temperature – On all PERFECT systems this is the temperature in which the ECM will take away a ground signal to an electric cooling fan relay thus turning the fan off. Set this temperature at approximately 10 degrees Fahrenheit lower than the On Temperature set point in order for the fan to run continuously. In most cases, the electric cooling fan will not need to cycle on and off, but if such operation is desired the On and Off temperature set points will need to be adjusted.

6. Fan 2 - NOT SUPPORTED IN PERFECT APPLICATIONS

7. Set Timing – Enable/Disable

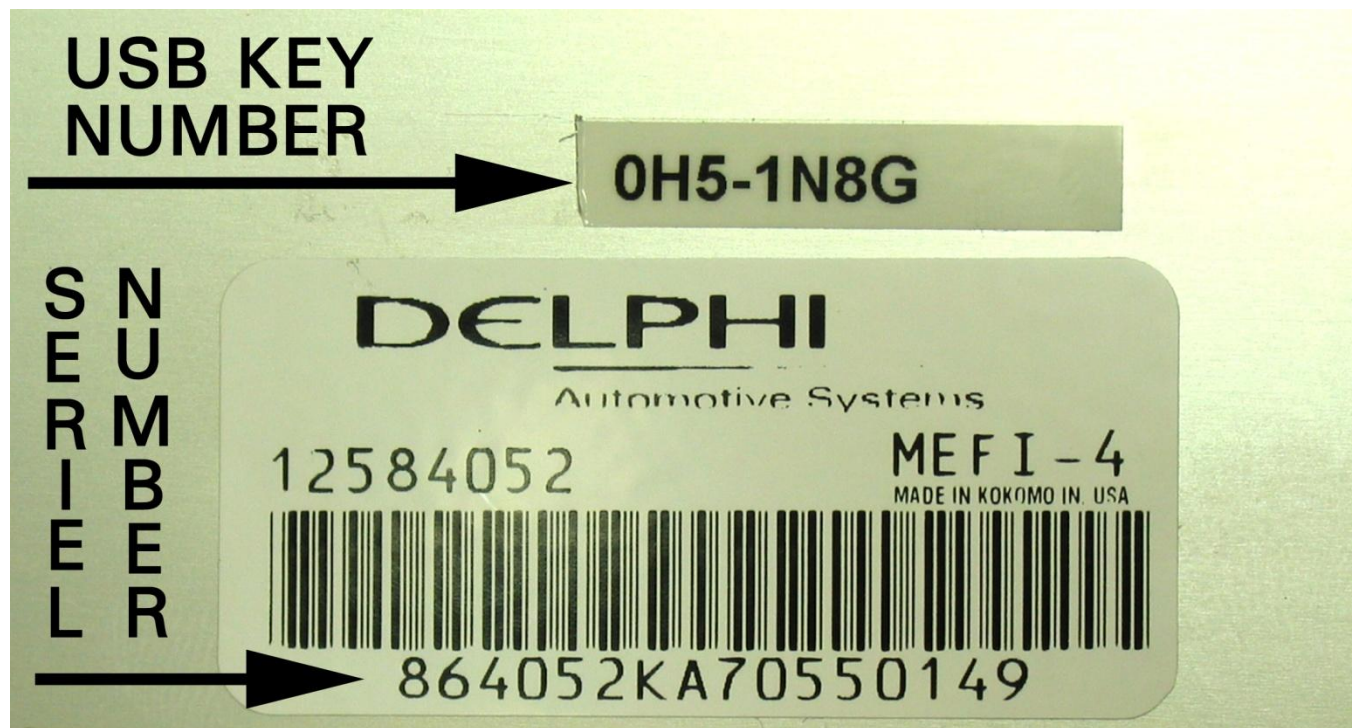
- By enabling the "Set Timing" mode, the ECM will force the spark advance to 10 degrees of base spark timing. At this point, adjust the distributor until the base timing tab is showing 10 degrees of advance. Lock down the distributor and then disable the Set Timing function. This function is used to synchronize the distributor advance to the ECM advance. In other words, the ECM and the Engine's distributor are now calibrated to each other. This function is only used on adjustable distributor ignitions engines.

The PERFECTION software has been designed specifically for use with the Delphi MEFI-4 engine control module supplied by Painless in the PERFECT Engine Management System. This programming software is not compatible with any other MEFI ECM.

Please note there are early and late versions of the PERFECT ECM. The early version only has the Delphi serial number on the label located on the back of the ECM. If you have this ECM you will need to send it in to Painless to have the latest base calibration flashed onto the ECM. Please contact Painless at 1-800-423-9696 for a return authorization and shipping instructions. There is no charge for this upgrade. **Be sure to send in the purple USB Key Number (as seen below) with your Purple USB key.**

The later version of the PERFECT ECM will have a USB key number in addition to the Delphi serial number. If you have this version of the ECM the USB dongle included in this software kit must be sent to Painless so it can be matched with the USB key number on the ECM. Again, please contact Painless for shipping instructions and make sure you send in the **purple USB Key Number (as seen below) with your Purple USB key.**

PERFECT software can only be used with the ECM and dongle for which each USB key number has been assigned.



Perfect Performance Products, LLC shall in no event be liable in contract or tort (including negligence) for special, indirect, incidental, or consequential damages, such as but not limited to, loss of property damage, or any other damages, costs or expenses which might be claimed as the result of the use or failure of the goods sold hereby, except only the cost of repair or replacement.